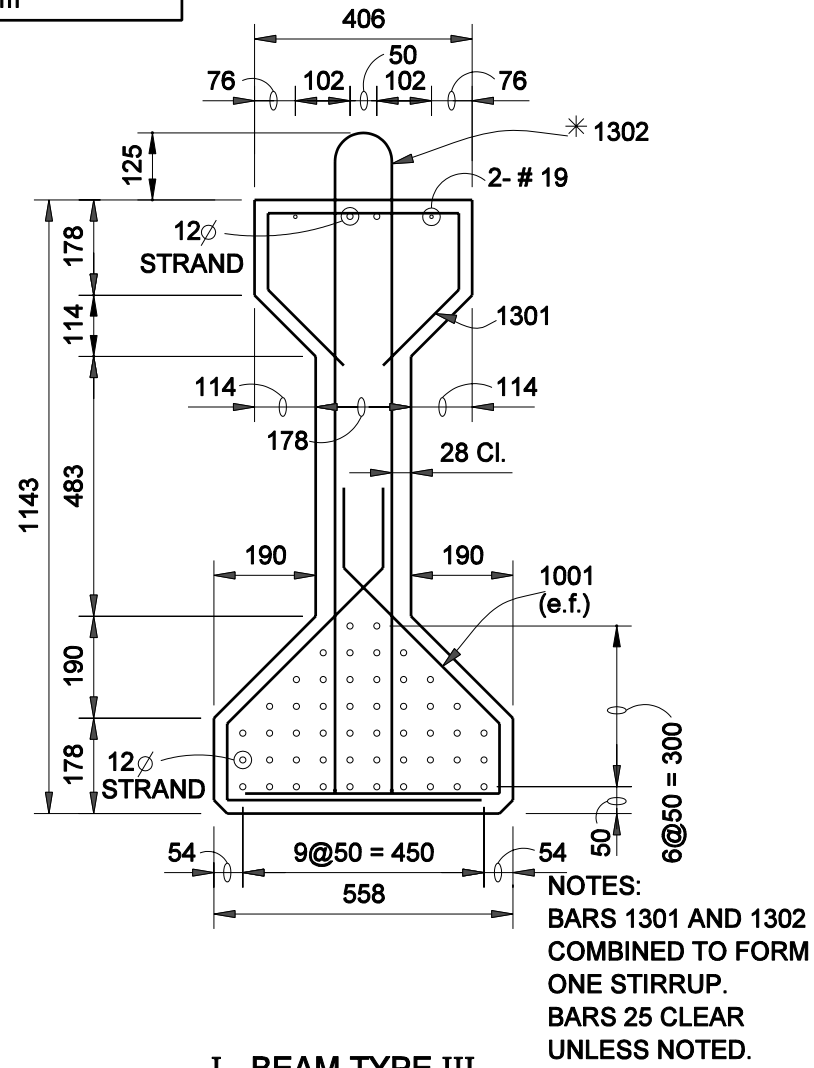


# **BEAM PROPERTIES**

$A_B = 360,700 \text{ mm}^2$   
 $I_B = 52,142 \times 10^6 \text{ mm}^4$   
 $S_{TB} = 83,042 \times 10^3 \text{ mm}^3$   
 $S_{BB} = 101,231 \times 10^3 \text{ mm}^3$   
 $Y_{TB} = 627.9 \text{ mm}$   
 $Y_{BB} = 515.1 \text{ mm}$   
 $W_t = 8.51 \text{ kN/m}$

\* DENOTES EPOXY COATED



**I - BEAM TYPE III**

**Figure 63-13G**